



GOOD MORNING  
Have Good Trading Day

THURSDAY



Price is what you pay.  
Value is what you get.

- Warren Buffet



## MARKET PULSE

### INDIAN INDICES

NAME	CMP	NET CH.	%
SENSEX	24223	-315	-1.29
NIFTY	7361	-93	-1.26

### INDIAN ADR'S

SYMBOL	CLOSE	GAIN/ LOSS %
DRREDDY	44.36	-0.56
HDFCBANK	58.20	-0.80
ICICIBK	5.98	-0.66
INFY	17.65	+0.51
TATAMOTOR	24.22	+0.29
WIPRO	11.77	Unch

### FII AND MF ACTIVITY

SYMBOL	In Crs.
FIIs Eq (Provisional)	-357.13
FIIs Index Future	-352.34
FIIs Index Options	472.12
FIIs Stock Future	-295.75
FIIs Stock Options	-52.37
DII's Eq (Provisional)	-144.78

### CURRENCY

RBI RATE	03-FEB-2016
RUPEE - \$	68.1825
EURO	74.4553
YEN 100	56.9800
GBP	98.3192

## MARKET PULSE

### GLOBAL INDICES

NAME	CMP	NET CH.	%
DOW	16336	+183	+1.13
NASDAQ	4504	-12	-0.28
NIKKEI	17069	-121	-0.71
HANG SENG	19290	+298	+1.57
SGX NIFTY	7426	+56	+0.76

### WORLD COMMODITIES

FUTURE	U\$\$	CHANGES
CRUDE	32.68	+0.40
NATURAL GAS	2.035	-0.003
GOLD	1140.7	-0.6
SILVER	14.660	-0.074
COPPER	2.1075	+0.0125

### WORLD EVENTS

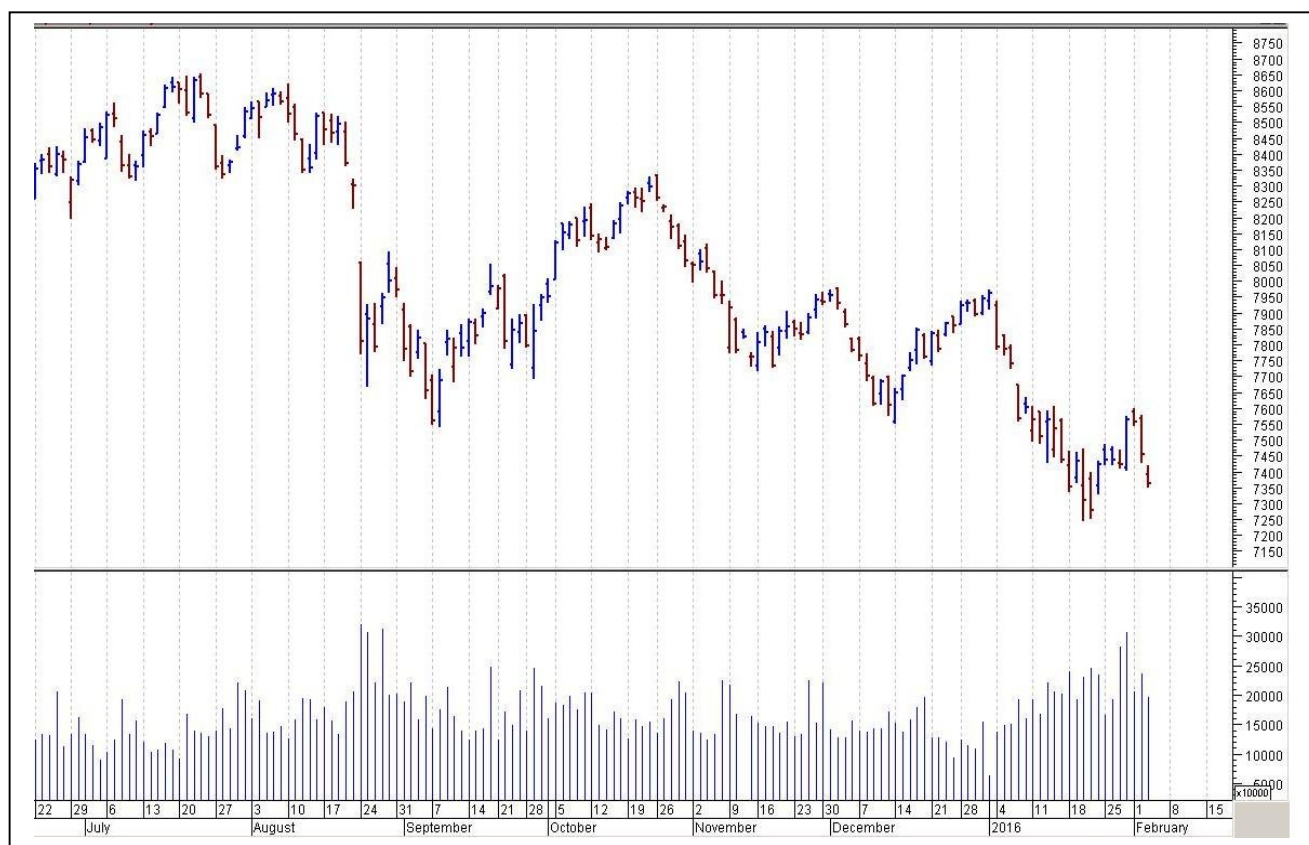
- US:Unemployment Claims
- UK:BOE Inflation Report
- MPC Official Bank Rate Votes
- Monetary Policy Summary
- Official Bank Rate
- BOE Gov Carney Speaks

## TOP STORY

- Hexaware Technologies Q4 Cons Net Profit Down 11% At `99.4 Cr Vs `111.6 Cr (QoQ) Cons Rupee Revenue Up 0.1% At `819.5 Cr Vs `818.4 Cr (QoQ) Cons Dollar Revenue Down 0.8% At \$124.1 m Vs \$125.1 m (QoQ)
- JM Financial Q3 Cons Net Profit At `117 Cr Vs `97.2 Cr (QoQ) Cons Total Income At `425.7 Cr Vs `365.8 Cr (QoQ)
- Mphasis (ET) Apollo, Blackstone to compete with TechM for stake in co. To compete for HP's 60.4% stake in co
- Maruti Suzuki - Suzuki to invest \$1bn, launch 15 vehicles in 3-5 years: ET
- DLF promoters could exit rental arm by July: ET
- NMDC: Fixes Iron Ore (Lump) Price For February At `1,800 mt. Fixes Iron Ore (Fines) Price For February At `1,560 mt



## NIFTY CHART



## MARKET COMMENTARY

The carnage in Indian stock markets prolonged for yet another session, as the benchmarks continued to sway to the tune of depressing global developments and deposed another over a percentage point on Wednesday. The drop in oil prices to 12-year lows has sent shudders through world markets, helping wipe trillions of dollars off share valuations and even raising fears of recession. Besides, there were no positive surprises from the third quarter earnings on the domestic front, while in the overseas markets global oil majors have reported weak earnings. Depreciation in Indian rupee also weighed on the sentiments. The rupee again broke below the 68-mark by depreciating 28 paise to trade at 68.26 against the dollar in today's trade due to increased demand for the American unit from importers and banks. For today's trade Nifty likely to trade in the range between 7375 – 7395 in the upper side and 7345 – 7315 in the lower side.

### MARKET LEVELS

	CMP	SUPPORT LEVELS				RESISTANCE LEVELS			
NIFTY	7361	7345	7315	7275	7235	7375	7395	7425	7455
USDINR	68.37	68.2	68.1	68.05	67.9	68.45	68.55	68.7	68.85





### FUTURES CORNER

SCRIPS	CLOSE	SUPPORT	TARGET		REMARKS
		STOP LOSS	T1	T2	
HEXAWARE(SELL)	219.25	222	217.5	215	TRADING CALL
HINDPTERO(SELL)	762.9	767	755	745	TRADING CALL
MINDTREE(SELL)	1487.4	1495	1465	1445	TRADING CALL

### EQUITY CORNER

SCRIPS	CLOSE	SUPPORT	TARGET		REMARKS
		STOP LOSS	T1	T2	
JBCHEPHARM	268.2	265	275	285	TRADING CALL
--	--	--	--	--	--

### DELIVERY BASED CALL / INVESTMENT CALL

SCRIPS	CMP	SUPPORT	TARGET		REMARK
		STOP LOSS	T1	T2	

### BULK DEALS (BSE)

SCRIP	CLIENT NAME	BUY/SELL	QUANTITY	PRICE
BODALCHEM	RAMESHBHAI PRABODHCHANDRA PATEL	S	575,000	52.2
TRIVENIGO	JMP SECURITIES PVT LTD	S	86,400	19.2

### BULK DEALS (NSE)

SCRIP	CLIENT NAME	BUY/SELL	QUANTITY	PRICE
BODALCHEM	RAMESHBHAI PRABODHCHANDRA PATEL	SELL	575000	52.2

### SCRIP'S IN F&O BAN

(To resume for normal trading below 80% of market wide limit required)

NIL



NIFTY 50 STOCKS: SUPPORT & RESISTANCE						
Symbol	Close	Support 1	Support 2	Pivot Point	Resistance1	Resistance2
ACC	1249	1234	1219	1256	1271	1294
ADANI PORTS	210	207	204	211	214	217
AMBUJACEM	192	189	187	194	196	200
ASIANPAINT	864	854	844	869	879	894
AXISBANK	381	376	372	383	387	394
BAJAJ-AUTO	2348	2323	2299	2359	2383	2419
BANKBARODA	121	117	114	120	123	126
BHARTIARTL	300	297	294	299	302	305
BHEL	128	126	124	130	132	135
BOSCH LTD	16744	16612	16480	16787	16920	17095
BPCL	830	818	806	837	849	869
CAIRN	116	113	111	116	118	121
CIPLA	562	555	547	567	574	586
COALINDIA	317	313	309	319	323	328
DRREDDY	3008	2991	2974	3015	3032	3055
GAIL	360	352	344	357	366	371
GRASIM	3412	3390	3369	3427	3448	3485
HCLTECH	852	844	836	857	865	878
HDFC	1161	1153	1144	1167	1175	1189
HDFCBANK	1044	1040	1036	1046	1050	1055
HEROMOTOCO	2485	2456	2428	2500	2528	2571
HINDALCO	67	66	65	67	68	69
HINDUNILVR	822	802	782	815	835	848
ICICIBANK	204	201	199	205	208	211
IDEA	104	101	98	103	106	108
INDUSINDBK	906	893	880	904	917	928
INFY	1158	1148	1139	1162	1171	1185
ITC	322	320	317	322	324	327
KOTAKBANK	666	661	656	666	671	677
LT	1109	1094	1079	1107	1122	1135
LUPIN	1699	1683	1667	1698	1714	1730
M&M	1203	1186	1169	1207	1224	1245
MARUTI	3828	3785	3742	3828	3871	3913
NTPC	129	126	123	130	133	136
ONGC	213	210	207	213	217	220
PNB	89	88	86	89	90	92
POWERGRID	143	141	139	144	146	148
RELIANCE	981	973	964	983	992	1002
SBIN	166	164	161	166	168	170
SUNPHARMA	835	824	814	840	850	865
TATAMOTORS	320	316	312	321	325	330
TATAPOWER	57	56	55	57	58	59
TATASTEEL	224	219	214	226	231	239
TCS	2416	2374	2333	2402	2444	2472
TECHM	472	466	460	472	478	483
ULTRACEMCO	2769	2744	2719	2775	2800	2831
VEDL	62	60	58	62	64	66
WIPRO	558	552	547	559	565	572
YESBANK	778	756	733	772	794	811
ZEEL	404	399	393	406	411	418



## CORPORATE ACTION / BOARD MEETINGS

NSE Download Ref.No.:NSE/CML/31635:- ESSAROIL will be suspended from trading w.e.f February 10, 2016 on account of Voluntary delisting

NSE Download Ref.No.:NSE/SURV/31633:- Max India Limited (MAX) shall be transferred from trade for trade Segment (series: BE) to rolling segment (series: EQ) w.e.f, February 10, 2016 (Wednesday).

NSE Download Ref.No.:NSE/SURV/31657:-Jindal Stainless (Hisar) Limited (JSLHISAR) shall be transferred from trade for trade segment (series: BE) to rolling segment (series: EQ) with effect from February 11, 2016 (Thursday).

NSE Download Ref.No.:NSE/CML/31672:- Trading in Equity Shares of Elder Pharmaceuticals Limited and Era Infra Engineering Limited will be suspended w.e.f February 25, 2016 on account of non-compliance with Clause 41 of the Listing Agreement

### BOARD MEETINGS

COMPANY NAME	DATE	PURPOSE	RS. PER SH.
TVSMOTOR	4-Feb-16	Dividend	1
ALKALI	4-Feb-16	Dividend	0.8
BEL	4-Feb-16	Dividend	2.5
AEGISCHEM	4-Feb-16	Dividend	0.3
SYMPHONY	4-Feb-16	Dividend	5
IIFL	5-Feb-16	Dividend	4.25
CONCOR	5-Feb-16	Dividend	8
GAEL	5-Feb-16	Dividend	0.8
MPSLTD	5-Feb-16	Dividend	8
NTPC	5-Feb-16	Dividend	1.6
MARICO	5-Feb-16	Dividend	1.5
SHANTIGEAR	8-Feb-16	Dividend	0.5
GRANULES	8-Feb-16	Dividend	0.15
VIPIND	8-Feb-16	Dividend	0.6
VRLOG	8-Feb-16	Dividend	
TCI	8-Feb-16	Dividend	
CHOLAFIN	9-Feb-16	Dividend	2.5
NCLIND	9-Feb-16	Dividend	1
WENDT	9-Feb-16	Dividend	10
SUNDARMFN	9-Feb-16	Dividend	4.5
KPRMILL	9-Feb-16	Dividend	5
AVTNPL	9-Feb-16	Dividend	0.2

## NEWS & RUMOURS:

- Gold (Spot Dollar) major support = \$1107/\$1080 & Resistance = \$1159/\$1195.
- Crude oil range->\$27 to \$37.
- U.S. Stocks, Dollar Fall on Services Data as Oil Rebound Falter: - U.S. stocks plunged after disappointing services data raised the risk that weakness in manufacturing is spreading at the same time that the [bear](#) market in financial shares deepened amid a litany of global growth concerns. Oil's rebound evaporated after U.S. inventory data.
- Zinc for delivery in three months pushed metals higher, gaining 0.3 percent to \$1,678.50 a metric ton on the London Metal Exchange. Lead climbed to the highest in about a month, with copper, aluminum and nickel also higher.
- Gold jumps to new 3-month high after U.S. ISM data disappoints: - Gold futures rose to the highest level since November in North America trade on Wednesday, after data showed that service sector activity in the U.S. [grew at the slowest pace in almost two years](#) in January, dampening optimism over the health of the economy and dimming the case for higher interest rates this year.
- WTI oil futures reverse gains after bearish supply data: - West Texas Intermediate oil futures reversed gains in North America trade on Wednesday, after data showed that oil supplies in the U.S. rose sharply last week, underlining concerns over a slowing demand for oil products.
- Natural gas prices hold near 6-week low ahead of weekly storage report: - U.S. natural gas futures fell back towards the prior session's six-week low on Wednesday, as market participants looked ahead to fresh weekly information on U.S. gas inventories to gauge the strength of demand for the fuel.

## TRENDS & OUTLOOK – DATE: 04- Feb- 2016

### PRECIOUS METALS:

COMMDITY (MCX)	S2	S1	PIVOT POINT	R1	R2
GOLD (Apr)	26710	26901	27120	27475	27700
SILVER (Mar)	33100	34000	35280	36700	37920

### BASE METALS

COMMDITY (MCX)	S2	S1	PIVOT POINT	R1	R2
COPPER (Feb)	303	309	314	322	327
ZINC (Feb)	110.10	112.30	114.75	117.90	120.20
LEAD (Feb)	115.45	118.20	120.90	124.45	127.20
NICKEL (Feb)	545	567	581	597	612

### ENERGY

COMMDITY (MCX)	S2	S1	PIVOT POINT	R1	R2
CRUDE OIL (Feb)	1850	1971	2080	2275	2345
NATURAL GAS (Feb)	126	133	139	144	151

### DATE TALKS : TODAY'S ECONOMIC DATA :

FOMC Member Rosengren Speaks, ECB President Draghi Speaks, BOE Inflation Report, Monetary Policy Summary & Official Bank Rate of GBP, Challenger Job Cuts, BOE Gov Carney Speaks, Unemployment Claims, Prelim Nonfarm Productivity, Prelim Unit Labor Costs, Factory Orders, Natural Gas Storage.





**Registered Office**

Indira House, 3rd Floor, 5 Topiwala Lane,  
Opp. Lemington Road Police Station, Grant Road (East), Mumbai - 400007.

**Corporate Office**

'Ramavat House' E-15, Saket Nagar, Indore - 452018 (M.P.)

**Customer Care**

Tel: +91-731-4097170/ 71/ 72/ 73/ 74 M. +91 93031 72345

Email: [customercare@indiratrade.com](mailto:customercare@indiratrade.com) [www.indiratrade.com](http://www.indiratrade.com)



**INSTITUTIONAL DEALING UNIT**

Africa House, 5, Topiwalla Lane, Lamington Road, Mumbai, 400007

Tel: +91 22 30080678 Fax : +91 22 23870767 Email : [ie@indiratrade.com](mailto:ie@indiratrade.com)

**Disclaimer**

This report is for private circulation within the Indira Group. This report is strictly confidential and for information of the selected recipient only and may not be altered in any way, transmitted to, copied or distributed, in part or in whole, to any other person or to the media or reproduced in any form. This report should not be construed as an offer or solicitation to buy or sell any securities or any interest in securities. It does not constitute a personal recommendation or take into account the particular investment objectives, financial situations, or any such factor. The information, opinions estimates and forecasts contained here have been obtained from, or are based upon, sources we believe to be reliable, but no representation of warranty, express or implied, is made by us to their accuracy or completeness. Opinions expressed are our current opinions as of the date appearing on this material only and are subject to change without notice.